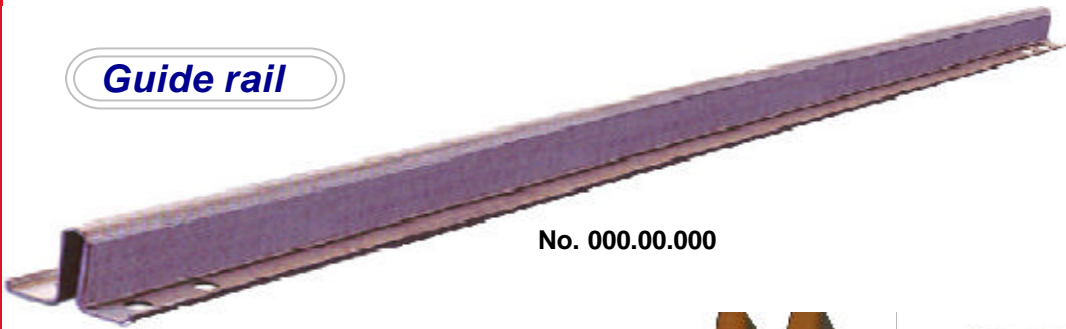


## GUIDE RAIL

### Guide rail



No. 000.00.000



No. 000.00.000

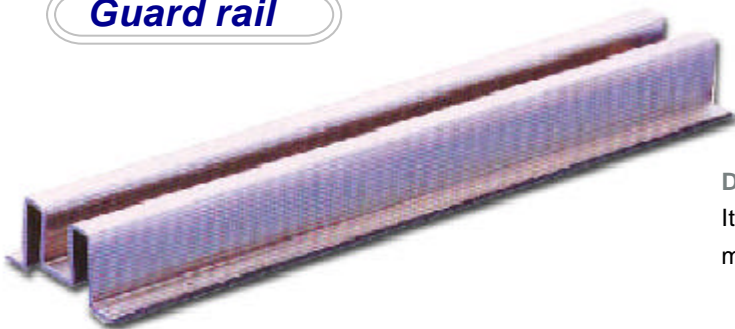


No. 000.00.000

#### Description

The elevator balance weight (COUNTER WEIGHT) the rail which guides

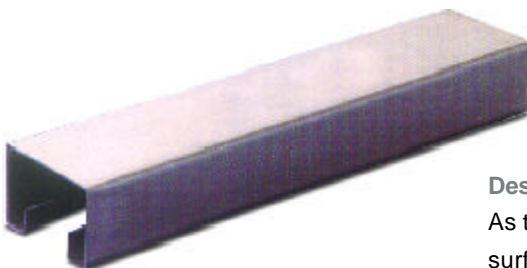
### Guard rail



#### Description

It guides the handle with from escalator mobile handle side.

### Jamb



#### Description

As the frame which the entrance of elevator each layer it bites the surface coating with paint SPCC quality of material product and stainless steel product.

HAIR LINE control is possible in the quality of material surface and the MIRROR also the formation of the material which it controls is possible.

## GUIDE RAIL

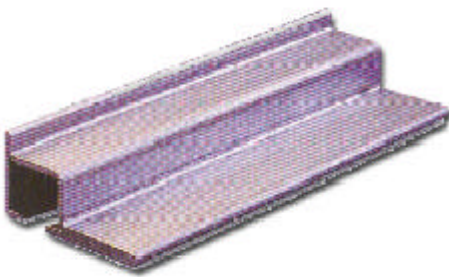
### *Steel guide*



**Description**

Approximately handle driving gear and it guides the handle between driving gear from escalator mobile handle return route.

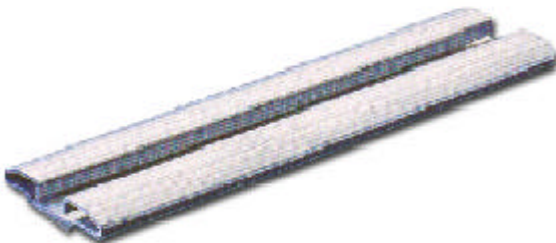
### *Truss rail guide*



**Description**

With the escalator stem mobile roller support rail. MIDDLE RAIL of existing compared to complement it produces with technique and to establish and conservatively work ease the product which is developed.

### *Hand rail guide*



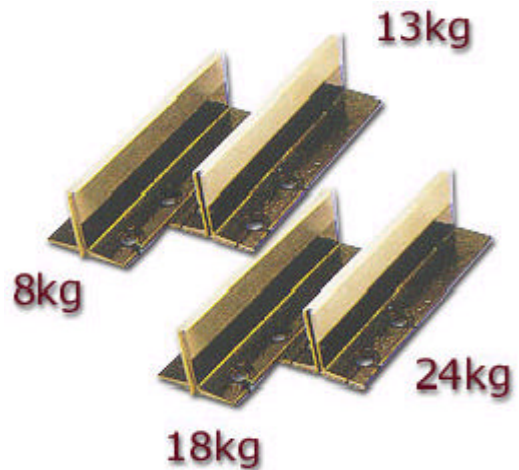
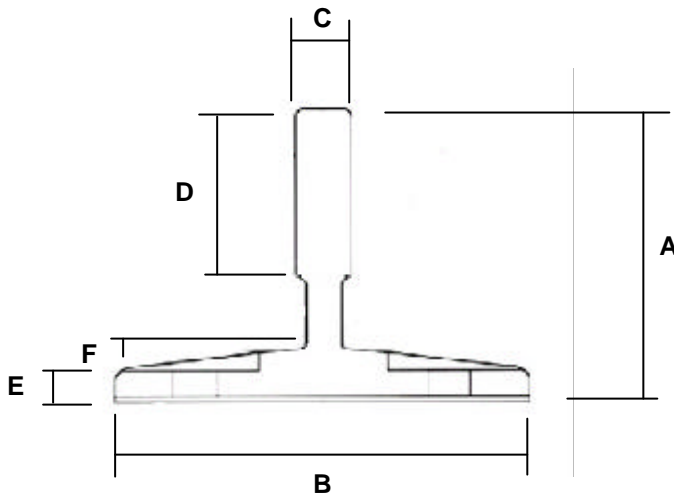
**Description**

With the escalator mobile handle side with the rail it follows in escalator type and selection use possible.

## GUIDE RAIL

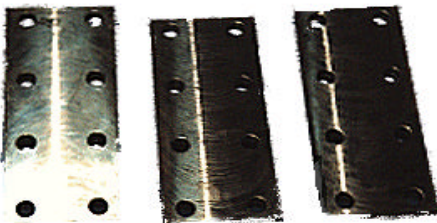
When ordering, please check the size of guide rail and specification, because its dimensions decide all other parts, such as Safety device ( safety gear ), guide shoe, rail clip and other parts related to the Guide rail.

For your quick reference, we'd like you to review the dimension of Guide rail as following.  
( The product specifications are classified by naming as **5K, 8K, 13K, 18 K and 24 K**, which K says kilogram in the weights of the part of 1 meter guide rail at 5 m total length. )

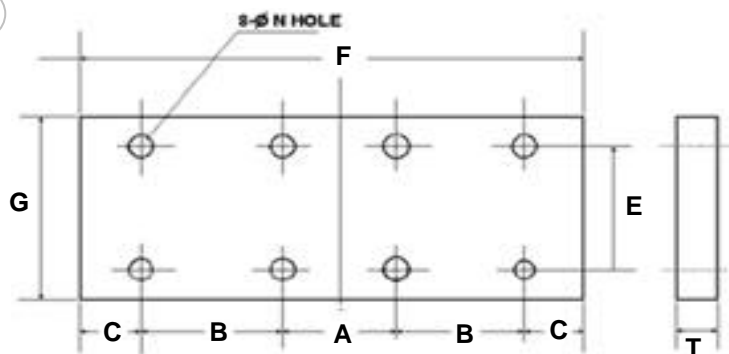


GUIDE RAIL	A	B	C	D	E	F
<b>8K</b>	55	78	10	26	6	8.5
<b>13K(T89)</b>	63	89	16	32	7.5	11.5
<b>18K</b>	88	114	16	38	8	11
<b>24K(T127)</b>	89	127	16	50	12.5	16

### KS-108 Series



### JOINT PLATE



Joint plates are available in sizes of 8K, 13K, 18K and 24K, providing a straightness tolerance of Korean Elevator Standard. And all designs and manufacture of Plate can be supplied to meet the Customers requirements. Surface of plate is manufactured with special care and accurate measurements.

MODEL NO.	SPEC.	A	B	C	D	E	F	G	N	T
<b>KS1081</b>	<b>8KG</b>	76	76	26	12.5	50	280	75	13	12
<b>KS1082</b>	<b>13KG</b>	76	76	26	17	56	280	90	13	16
<b>KS1083</b>	<b>18KG</b>	76	76	26	22	71	280	115	17	19
<b>KS1084</b>	<b>24KG</b>	76	76	26	25	80	280	130	17	19