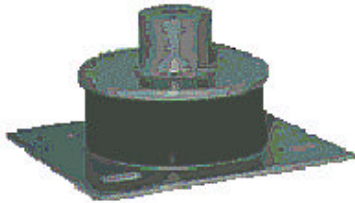
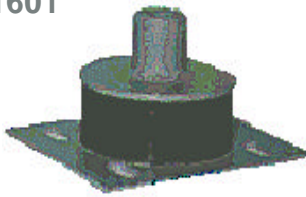


ISOLATION RUBBER

KS-160 Series



No. KS-1601



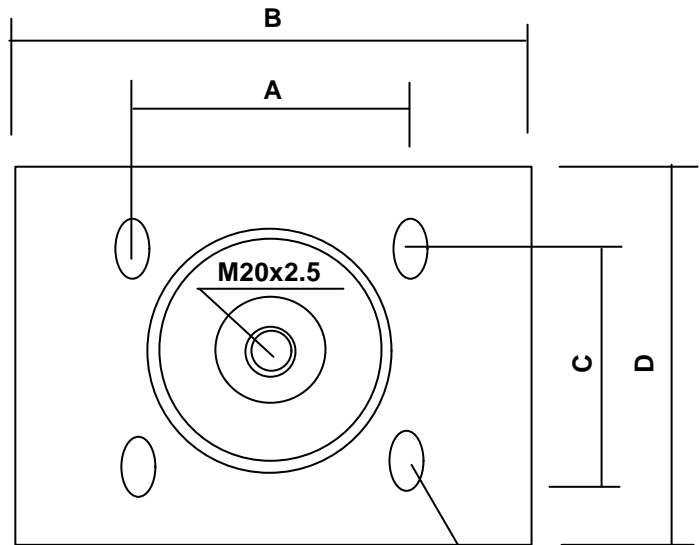
No. KS-1602

KS-160, the isolation rubber, is typically used to eliminate objectionable structure borne noise from the operation of elevators. It prevents the transmission of vibration from the machinery parts, through the cables to the passenger car by its installation on the elevator brackets where it is fastened to the building structure. The surface of the rubber is painted with special care paint and the steel part is treated with anti-rust paint.

MODEL NO.	MARK	MODEL NAME
KS1601	1	LARGE BUFFER
KS1602	2	SMALL BUFFER

- **MAXIMUM LOAD** : 1000 Kg
- **RECOMMENDED LOAD** : More than 1000 Kg, Less than 1500 Kg
- **SPRING LOAD** : 2150 Kg

	KS1601	KS1602
A	167	142
B	220	200
C	116	116
D	180	180
E	48	48
F	140	140
G	55	55
H	5	5
I	6	6



NO.	PART	MATERIAL
1	Fitting Plate	SS41
2	Fitting Plate	SS41
3	Rubber	SS41
4	Nut	SS41

