

## PLANT FACILITIES



Automatic Roller Manufacturing Machine



Oil-Pressure Press for  
Bearing Insertion

**Having an understanding of technology development**, we have introduced Urethane automatic mixing equipment operating under P.I.D Control system and made quality improvement in urethane moldings to respond needs for high quality from the industry. For precision processing and cost efficiency, Keesang has also installed and operated an automatic lathe, which can provide both automatic conveyance and manufacturing of rollers by using Robot and skip conveyor.



Automatic Urethane  
Molding Machine



Power Lathe of CNC

## PLANT FACILITIES



**We are employing** the Sampling Test System in every lot as well as equipped with various kinds of instruments including testing equipment for properties, reliability and durability tests for quality assurance.

- Wheel diameter :  $\varnothing 800$
- Wheel RPM : 0~200 rpm/ H
- Load cell Weight : 1,000 kg
- Motor : 7.5 k
- Examination subject :  
Urethane exfoliation, Urethane crack degree

**Reliability Testing Apparatus  
for Hanger roller**



- Wheel diameter :  $\varnothing 250$
- Wheel RPM : 0~200 rpm/ H
- Load cell Weight : 500 kg
- Motor : 2.2 k
- Examination subject :  
Urethane exfoliation, Urethane crack degree

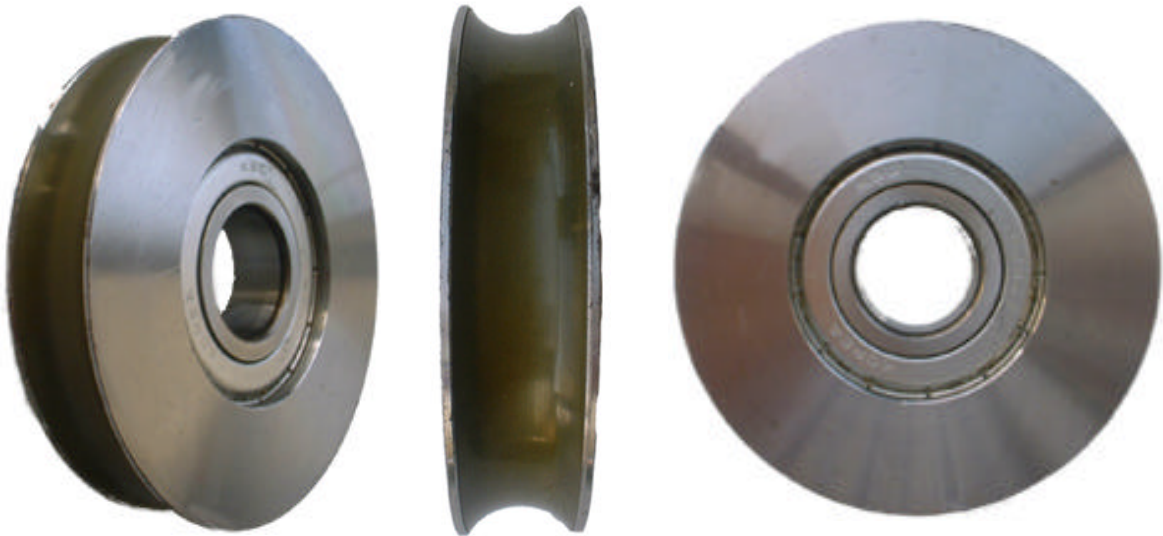
**Reliability Testing Apparatus  
for Escalator Step roller,  
Guide roller and  
Parking system roller**



- Examination subject :  
Urethane exfoliation, Urethane crack degree

**Urethane Property of  
Material Testing Machine**

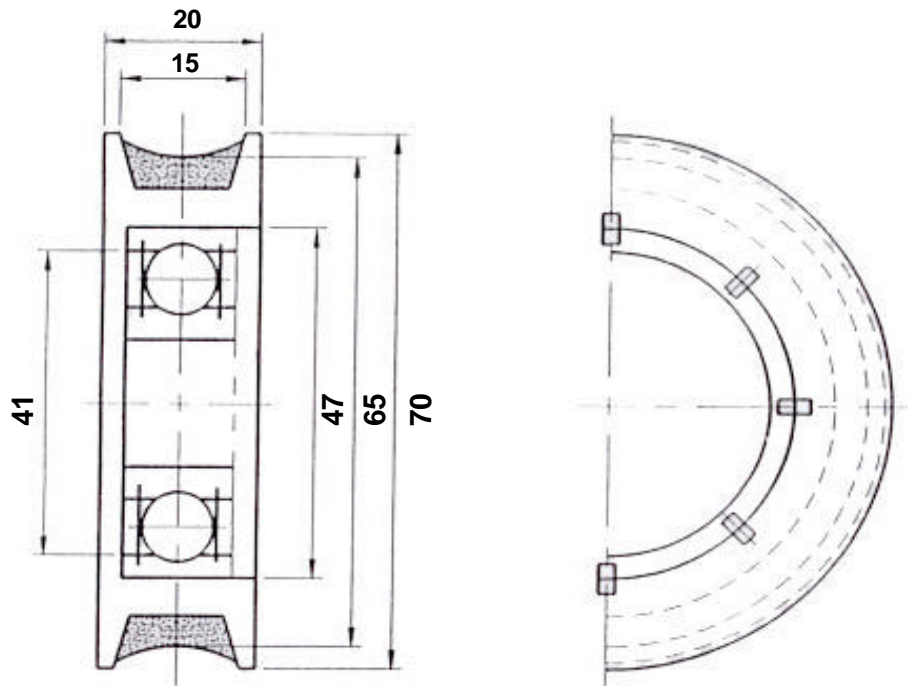
## HANGER ROLLER : KSDR-09



No. KSDR-09

Boss Material : S40 round stick  
Urethane Tire : P.T.M.G  
Safety Load : 440 lb (200Kg)

Bearing  
**6203ZZ**



Dimension : KSDR-09